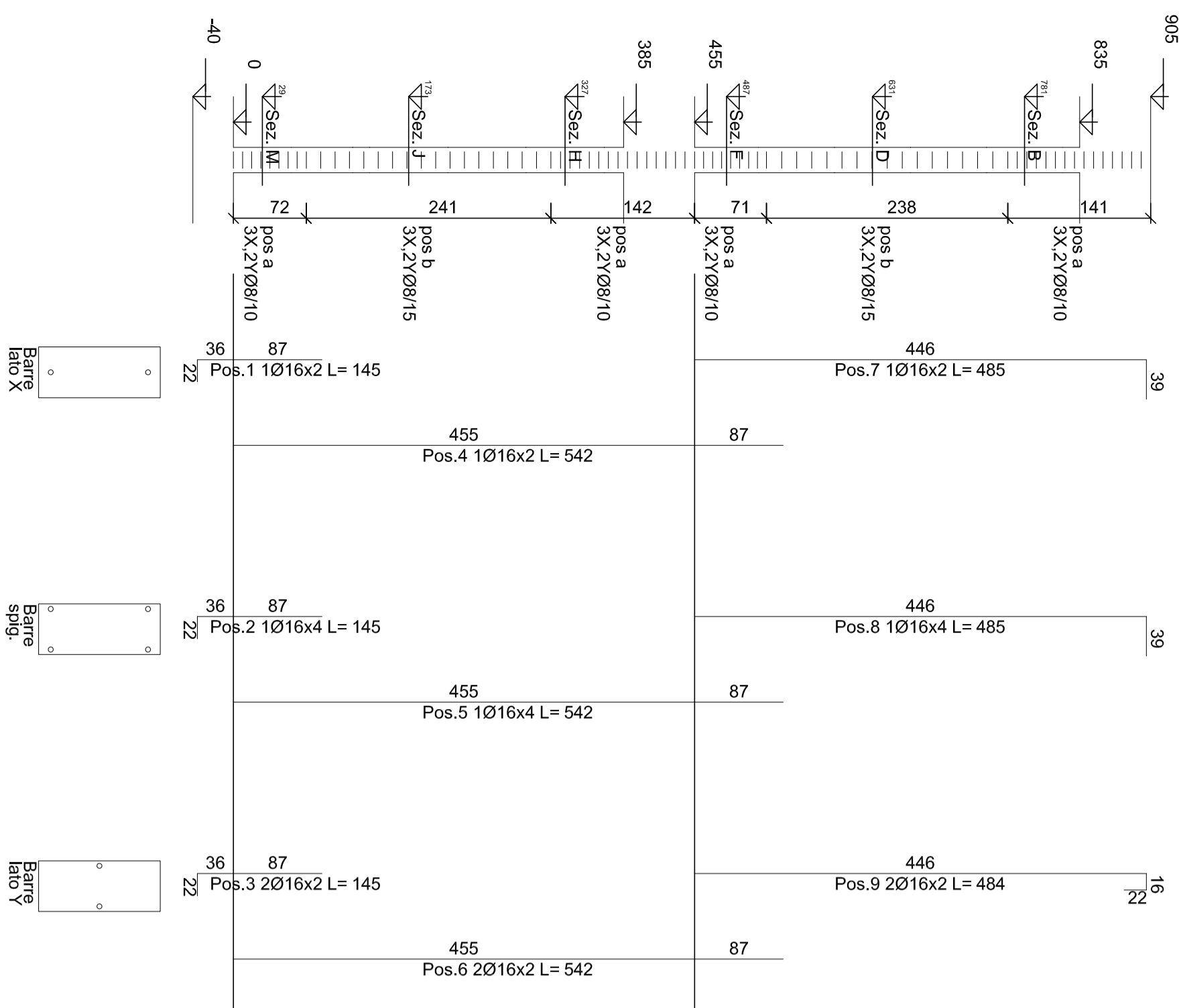
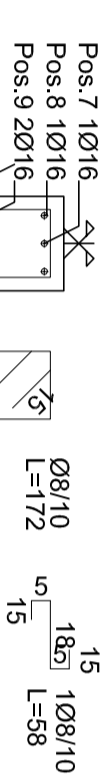


Plastrata 52

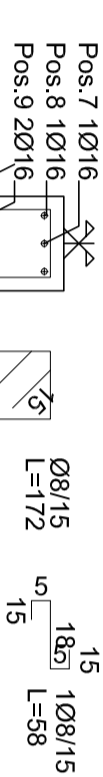
Elenco stelle
10
b (3x2x) Ø8/15



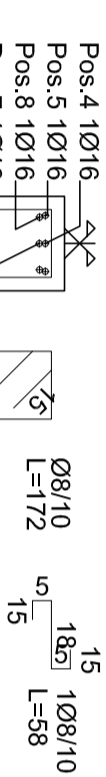
Sezione B 25x60



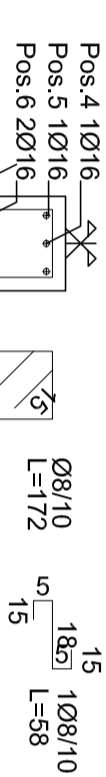
Sezione D 25x60



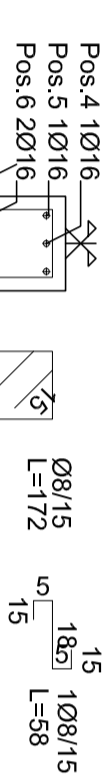
Sezione F 25x60



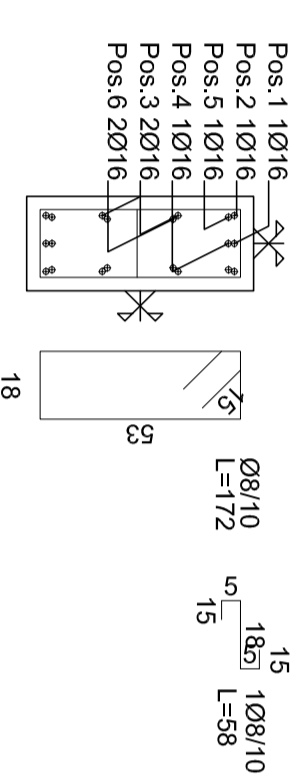
Sezione H 25x60



Sezione J 25x60

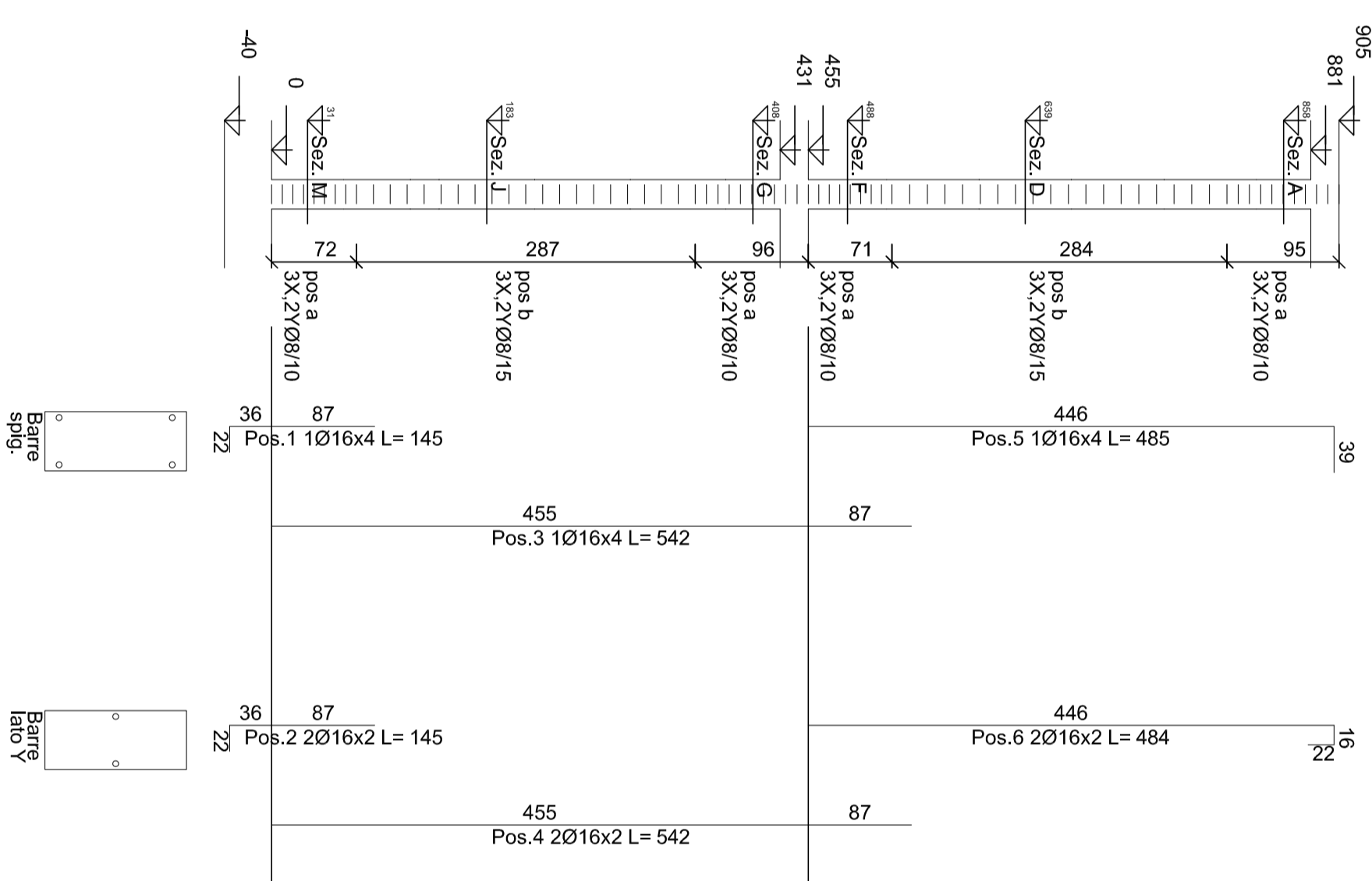


Sezione M 25x60

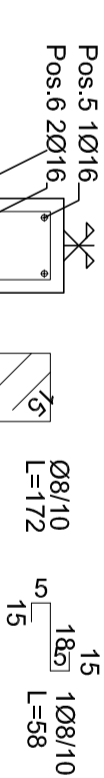


Plastrata 57 - 60 - 65 - 85

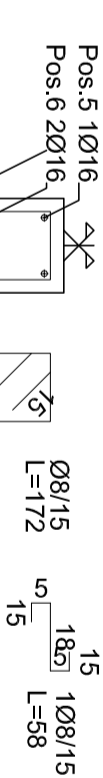
Elenco stelle
10
b (3x2x) Ø8/15



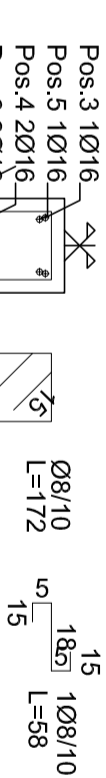
Sezione A 25x60



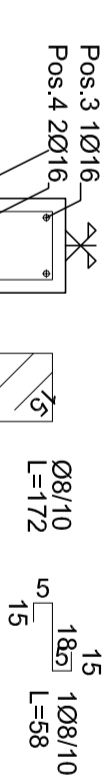
Sezione D 25x60



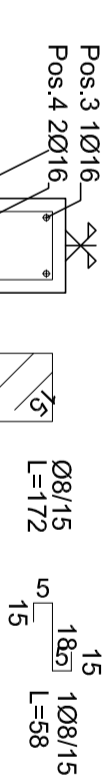
Sezione F 25x60



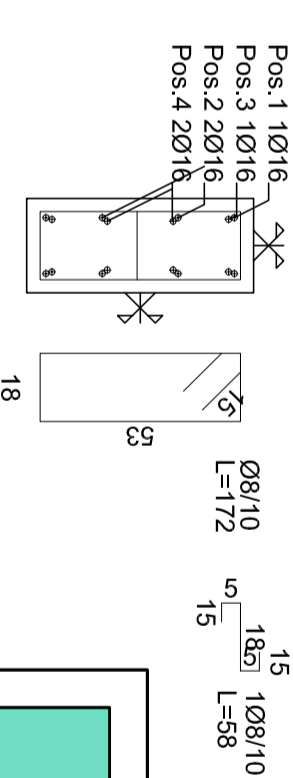
Sezione G 25x60



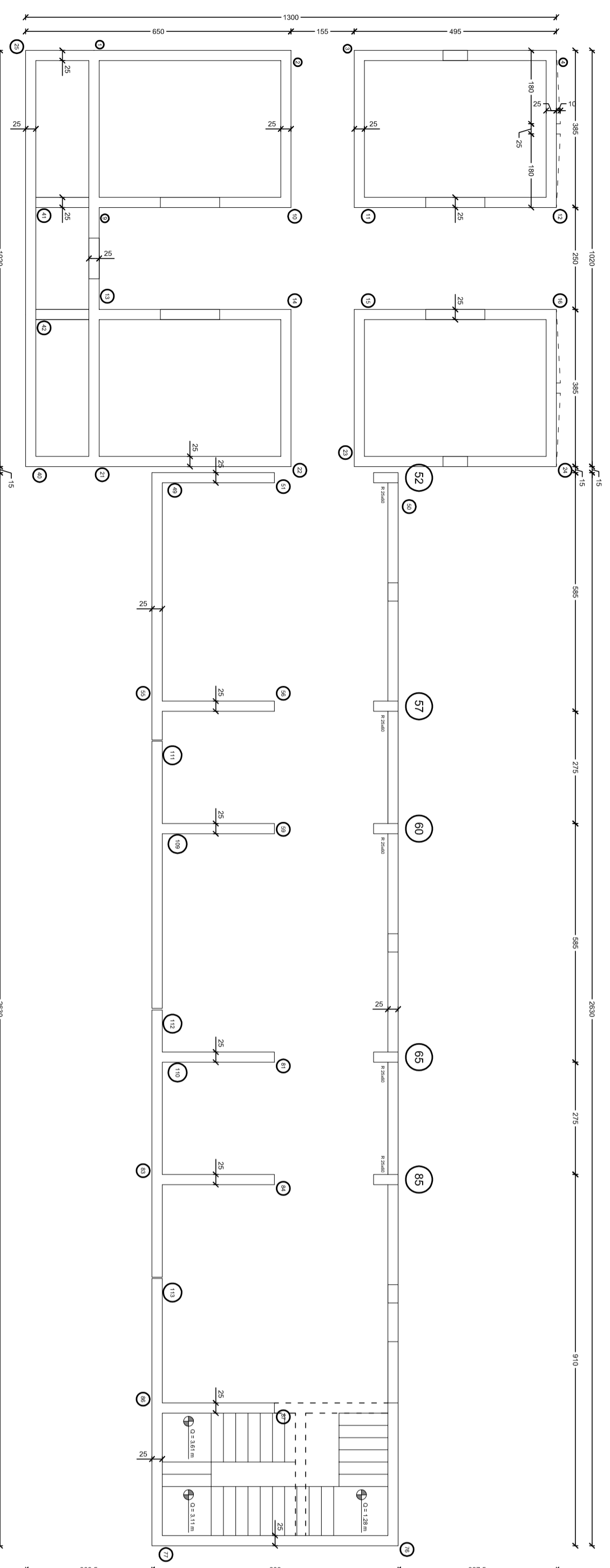
Sezione J 25x60



Sezione M 25x60



MATERIALI IMPIEGATI
Calcestruzzo C 28 / 35
Acciaio B450C



PIANTA PILASTRI
scala 1:100

SETTORE 3 - UFFICIO LAVORI PUBBLICI



COMUNE DI SANTA MARIA A MONTE
Provincia di Pisa

AMPLIAMENTO CIMITERO SANTA MARIA A MONTE
- LOTTO 1 -

PROGETTO DEFINITIVO ESECUTIVO

UBICAZIONE: VIA QUERCE

PILASTRI scala 1:50

Maggio 2017

S11

RESPONSABILE DEL PROCEDIMENTO,
PROGETTISTA, E DIRETTORE LAVORI
COLLABORATORI ALLA PROGETTAZIONE
Dot. Ing. Maurizio Iannotti
Servizio LL.PP. Comune di Santa Maria a Monte
Dot. Ing. Nico Marchetti - Dot. Ing. Alessandro Veracchi
Servizio LL.PP. Comune di Santa Maria a Monte
Dot. Geol. Alessandra Giannetti
Servizio LL.PP. Comune di Santa Maria a Monte
Dot. Ing. Luciano Pasqualelli
Servizio LL.PP. Comune di Santa Maria a Monte
Dot. Ing. Alessandro Veracchi
COORDINATORE DELLA SICUREZZA

